



# ART SHOW

## Partner Family Art Show



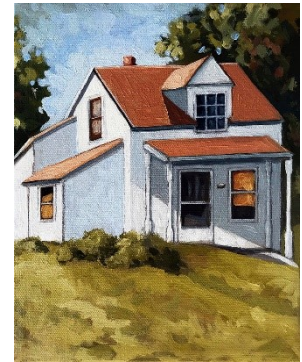
Submissions must be delivered to the NPAHFH office by 5pm, Monday, November 29th 2021 & conform to the following rules & guidelines:

A maximum of one piece of original artwork, per NPAHFH Partner Family member will be accepted.

Any format & combination of media are permitted, with one exception: **ABSOLUTELY NO GLITTER!**

Entries containing foul language &/or expressions of a suggestive or otherwise inappropriate nature will NOT be accepted.

Once submitted, show entries become the permanent property of NPAHFH for use in public relations efforts.



Artist attendance at the Mailbox Auction event on December 14th is encouraged, but not required.

